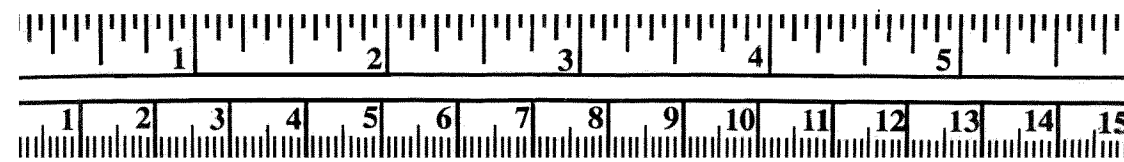
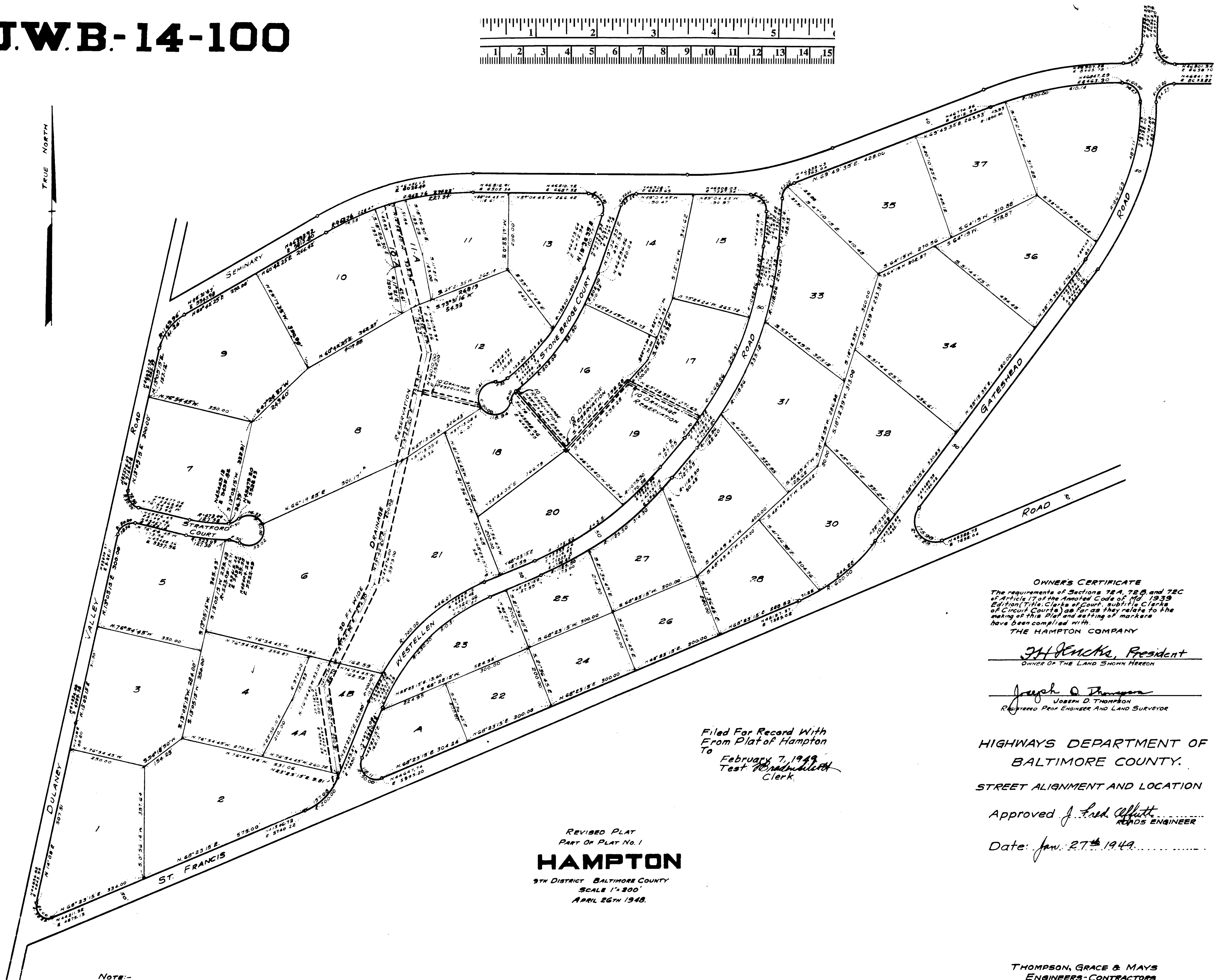


# J.W.B.-14-100



TRUE NORTH



**OWNER'S CERTIFICATE**  
 The requirements of Sections 72A, 72B, and 72C of Article 17 of the Annotated Code of Md. 1939 Edition (Title, Clerks of Court, Subtitle, Clerks of Circuit Courts) as far as they relate to the making of this Plat and setting of markers have been complied with.

THE HAMPTON COMPANY  
*J.H. Jencks, President*  
 OWNER OF THE LAND SHOWN HEREON

*Joseph D. Thompson*  
 JOSEPH D. THOMPSON  
 REGISTERED PROFESSIONAL ENGINEER AND LAND SURVEYOR

Filed For Record With  
 From Plat of Hampton  
 To  
 February 7, 1949  
 Test *W. R. ...*  
 Clerk.

HIGHWAYS DEPARTMENT OF  
 BALTIMORE COUNTY.

STREET ALIGNMENT AND LOCATION

Approved *J. Fred Affutt*  
 ROADS ENGINEER

Date: Jan. 27<sup>th</sup> 1949

REVISED PLAT  
 PART OF PLAT No. 1  
**HAMPTON**  
 9TH DISTRICT BALTIMORE COUNTY  
 SCALE 1" = 200'  
 APRIL 26TH 1948.

NOTE:-  
 This Plat is Based on Metropolitan District  
 OF Baltimore County Coordinate System.

THOMPSON, GRACE & MAYS  
 ENGINEERS-CONTRACTORS  
 FIDELITY TRUST COMPANY BUILDING  
 YORK ROAD, TOWSON 4, MD.