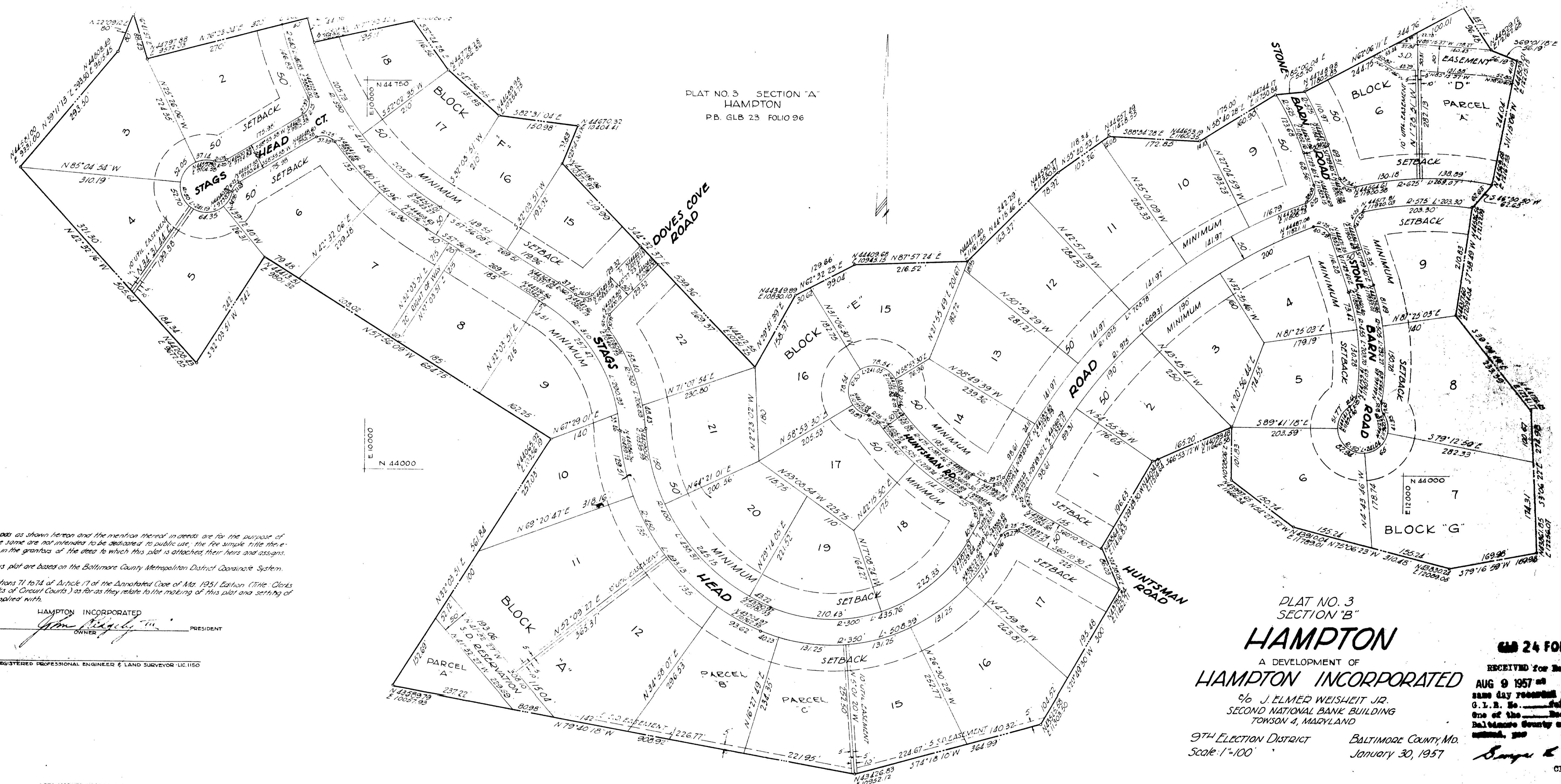




PLAT NO. 3 SECTION "A"
HAMPTON
P.B. GLB 23 FOLIO 56



The streets and/or roads as shown hereon and the mention thereof in deeds are for the purpose of description only, and the same are not intended to be dedicated to public use, the fee simple title thereof is expressly reserved in the grantors of the deed to which this plat is attached their heirs and assigns.

Coordinates shown on this plat are based on the Baltimore County Metropolitan District Coordinate System.

The requirements of Sections 71 to 74 of Article 17 of the Annotated Code of Md. 1951 Edition (Title, Clerks of Court, Substitute, Clerks of Circuit Courts) as far as they relate to the making of this plat and setting of markers have been complied with.

HAMPTON INCORPORATED
OWNER
John P. ... PRESIDENT
REGISTERED PROFESSIONAL ENGINEER & LAND SURVEYOR - LIC. 1150

PLAT NO. 3
SECTION "B"
HAMPTON
A DEVELOPMENT OF
HAMPTON INCORPORATED
96 J. ELMER WEISHEIT JR.
SECOND NATIONAL BANK BUILDING
TOWSON 4, MARYLAND

GLB 24 FOLIO 56

RECEIVED for Record
AUG 9 1957
same day recorded in liber
G. L. B. No. ...
One of the Records of
Baltimore County and an-
nounced, per

9TH ELECTION DISTRICT
Scale: 1"=100'
BALTIMORE COUNTY, MD.
January 30, 1957

George E. ...
Clerk

LOTS MARKED "PARCELS A, B, ETC." DISTINGUISHED FROM THOSE IDENTIFIED BY NUMERALS HAVE NOT PASSED SOIL PERCOLATION TESTS. APPROVAL OF BUILDING APPLICATIONS FOR THESE PARCELS WILL BE WITHHELD UNTIL SUCH TIME THAT ADDITIONAL TESTS PROVE SATISFACTORY OR PUBLIC SEWERAGE IS AVAILABLE.

ALL 8/30/57
S.S.B. per

APPROVED FOR BALTIMORE COUNTY HEALTH DEPARTMENT	HIGHWAYS DEPARTMENT OF BALTIMORE COUNTY APPROVED FOR STREET ALIGNMENT AND LOCATION	APPROVED FOR BALTIMORE COUNTY PLANNING BOARD	THOMPSON & GRAFF ENGINEERS & SURVEYORS TOWSON 4, MD.
BY: <i>Wm. H. ...</i> DEPUTY STATE & COUNTY HEALTH OFFICER	BY: <i>...</i> ENGINEER	BY: <i>...</i> DIRECTOR	

MSA 554 133C -1740