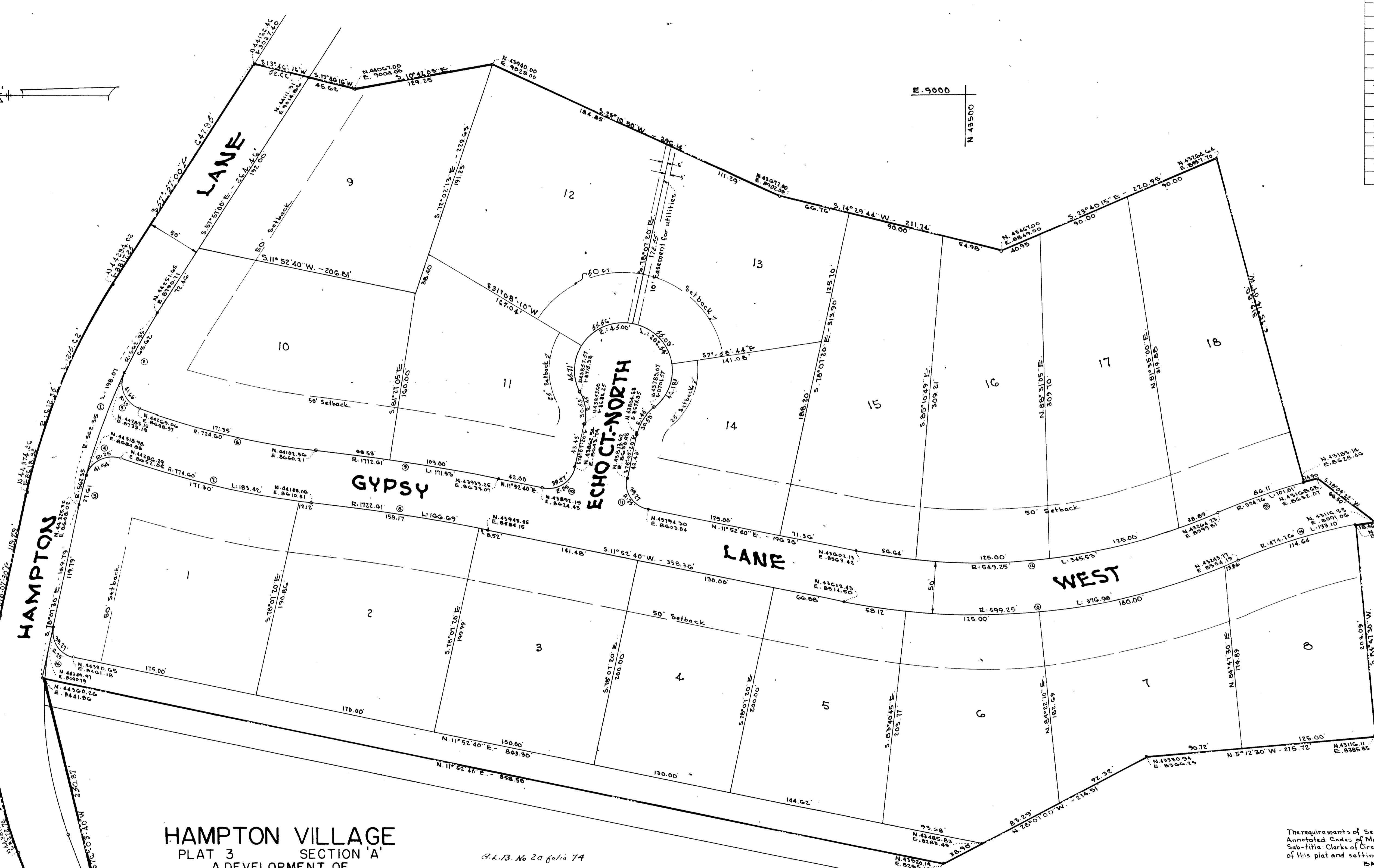


CURVE DATA						
No.	Radius	Δ	ARC	TAN	CHORD	L.C.B.
1.	562.35	20°10'50"	198.81	100.84	196.99	N. 68°02'15" W.
2.	562.35	6°41'01"	65.62	32.84	65.58	N. 61°17'55" W.
3.	562.35	2°46'48"	27.61	13.81	27.61	N. 76°43'06" W.
4.	25.00	95°12'43"	41.54	27.36	36.93	N. 27°42'20" W.
5.	25.00	95°28'57"	41.66	27.51	37.01	N. 67°51'25" E.
6.	724.00	13°32'56"	171.35	86.08	170.95	N. 13°06'28" E.
7.	174.00	13°34'01"	183.42	92.14	182.98	N. 13°01'01" E.
8.	1722.61	5°32'40"	166.09	83.41	166.63	N. 9°06'20" E.
9.	1772.61	5°32'40"	171.53	85.89	171.47	N. 9°06'20" E.
10.	25.00	90°00'00"	39.27	25.00	35.36	N. 33°01'20" W.
11.	25.00	90°00'00"	39.27	25.00	35.36	N. 56°52'40" E.
12.	549.25	36°02'40"	345.53	178.70	339.84	N. 6°08'40" W.
13.	599.25	36°02'40"	370.98	194.97	370.80	N. 6°08'40" W.
14.	474.76	16°03'46"	193.10	66.99	192.66	N. 17°08'07" W.
15.	524.76	16°03'46"	101.01	50.66	100.86	N. 18°39'03" W.
16.	25.00	90°00'10"	39.27	25.00	35.36	N. 56°52'35" E.



HAMPTON VILLAGE
 PLAT 3 SECTION 'A'
 A DEVELOPMENT OF
 BAY COUNTRY DEVELOPERS, INC.
 9 ELECTION DIST. BALTO. COUNTY, MD.
 Scale: 1" = 50'
 June 15, 1954

C.L. 13, No. 20 folio 74

FILED FOR RECORD WITH
 FROM _____
 SEP 2 1954
 19
 REGISTERED PROFESSIONAL ENGINEER

NOTE:
 The streets and/or roads as shown hereon and the mention thereof in deeds are for the purpose of description only and the same are not intended to be dedicated to public use; the fee simple title thereof is expressly reserved to the grantors of the deed to which this plat is attached their heirs and assigns.

Coordinates shown on this plat are based on Metropolitan District of Baltimore County coordinate system.

The requirements of Sections 72A, 72B and of Article 17 of the Annotated Codes of Md. 1939 Edition (Title: Clerks of Court, Sub-title: Clerks of Circuit Courts), as far as they relate to the making of this plat and setting the markers have been complied with.
 BAY COUNTRY DEVELOPERS, INC. - owners

James S. Spamer
 Owners of the land shown hereon
 James S. Spamer
 Registered Professional Engineer #2181

STATE HEALTH DEPARTMENT APPROVAL
 William V. S. ...
 DEPUTY STATE HEALTH OFFICER

APPROVED FOR BALTIMORE COUNTY PLANNING COMMISSION
 By *William J. ...*
 DIRECTOR

HIGHWAYS DEPARTMENT OF BALTIMORE COUNTY APPROVED FOR STREET ALIGNMENT AND LOCATION
 By *Robert J. ...*
 ROAD ENGINEER

JAMES S. SPAMER
 REGISTERED PROFESSIONAL ENGINEER
 42 W. CHESAPEAKE AVENUE
 TOWSON 4, MD.