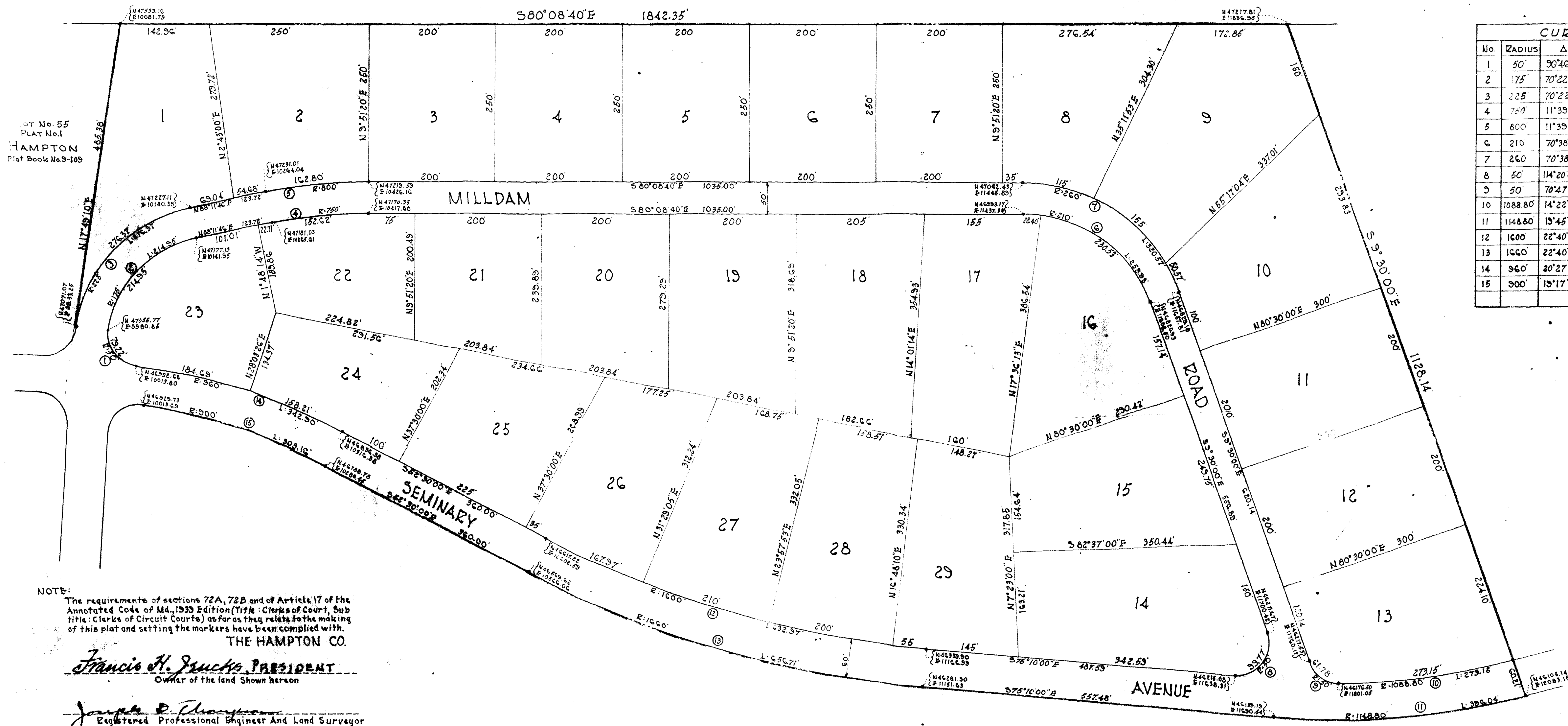


ST No. 55
 PLAT No. 1
 HAMPTON
 Plat Book No. 9-109



CURVE DATA						
No.	RADIUS	Δ	ARC	TAN	CHORD	L.C.B.
1	50'	90°46'30"	79.22	50.68	71.19	N27°34'05"W
2	75'	70°22'30"	214.95	123.40	201.69	N59°00'28"E
3	225'	70°22'30"	276.37	158.65	259.32	N63°00'28"E
4	750'	11°39'34"	152.62	76.58	182.36	S85°58'27"E
5	800'	11°39'34"	162.80	81.68	162.52	S85°58'27"E
6	210'	70°38'40"	258.93	148.81	242.83	S44°49'20"E
7	260'	70°38'40"	320.57	184.24	300.65	S44°49'20"E
8	50'	114°20'00"	35.77	77.49	84.03	N47°40'00"E
9	50'	70°47'34"	61.78	35.53	57.92	S44°53'47"E
10	1088.80'	14°22'20"	273.15	137.30	272.43	S67°28'47"E
11	1148.80'	15°45'08"	396.04	200.00	394.08	S65°02'34"E
12	1600'	22°40'00"	632.97	320.68	628.86	S63°50'00"E
13	1600'	22°40'00"	656.71	332.71	652.44	S63°50'00"E
14	960'	20°27'50"	342.90	173.90	341.08	S62°49'58"E
15	900'	19°17'58"	303.16	158.09	301.72	S62°08'53"E

NOTE:
 The requirements of sections 72A, 72B and of Article 17 of the Annotated Code of Md., 1933 Edition (Title: Clerks of Court, Sub title: Clerks of Circuit Courts) as far as they relate to the making of this plat and setting the markers have been complied with.

THE HAMPTON CO.
Francis H. Gruchas, PRESIDENT
 Owner of the land Shown hereon
Joseph P. Chapman
 Registered Professional Engineer And Land Surveyor

NOTE:
 The streets and/or roads as shown hereon and the mention there of in deeds are for the purpose of description only and the same are not intended to be dedicated to public use; the fee simple title thereof is expressly reserved in The Hampton Company, a body corporate, its successors and assigns, the owners of the tract shown hereon.

NOTE:
 Coordinates shown on this plat are based on Metropolitan District of Baltimore County Coordinates system.

PLAT NO. 2
 SECTION "A"
HAMPTON
 A DEVELOPMENT OF
 THE HAMPTON COMPANY
 9TH ELECTION DISTRICT BALTIMORE, COUNTY
 Scale: 1"=100' September 14, 1950

HIGHWAYS DEPARTMENT OF BALTIMORE COUNTY
 APPROVED FOR STREET ALIGNMENT AND LOCATION
 By *J. Fred Effitt*
 ROAD ENGINEER
 Oct. 10th 1950
 DATE

APPROVED FOR BALTIMORE COUNTY PLANNING COMMISSION
 By *Malcolm H. Dill*
 DIRECTOR
 Oct. 9, 1950
 DATE

THOMPSON, GRACE AND MAYS, INC.
 ENGINEERS-CONTRACTORS
 FIDELITY TRUST COMPANY BLDG.
 TOWSON 4, MARYLAND