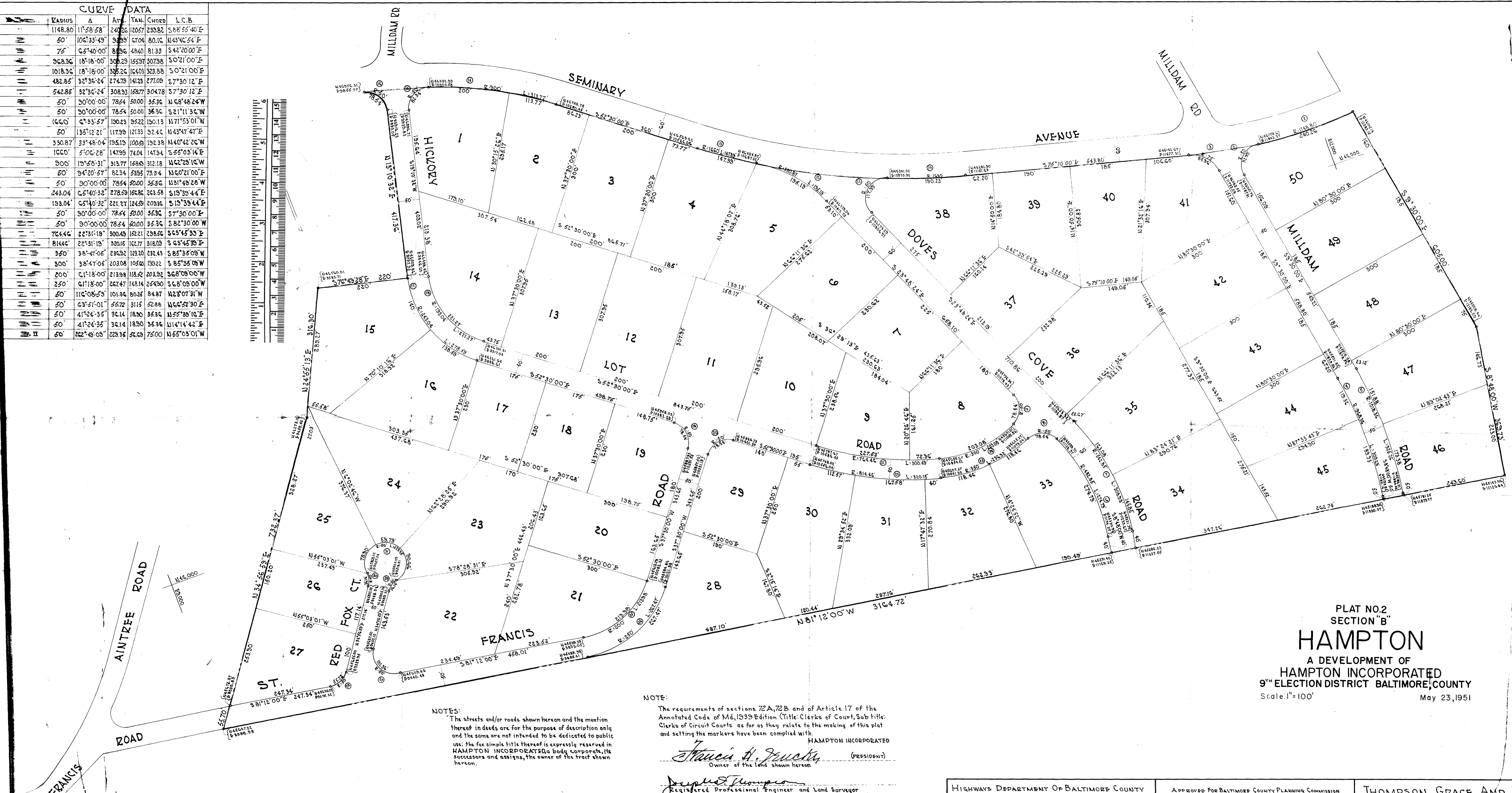
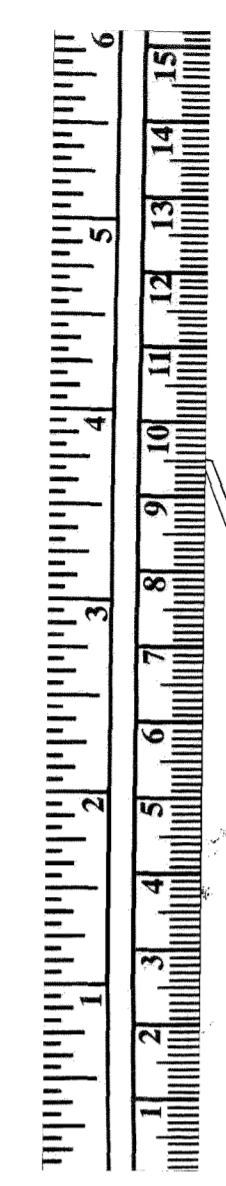


CURVE DATA	RADIUS	Δ	ARC	TANG.	CHORD	L.C.B.
	1148.80	11°58'58"	240.26	120.57	233.82	S 88°55'40" E
	50	106°33'49"	9.859	6.704	80.16	N 43°46'54" E
	75	65°40'00"	8.936	4.840	81.33	S 42°20'00" E
	568.96	18°18'00"	308.29	155.97	307.98	S 0°21'00" E
	1018.36	18°18'00"	325.26	164.03	323.88	S 0°21'00" E
	482.85	32°36'24"	274.78	141.23	271.09	S 7°30'12" E
	542.85	32°36'24"	308.93	162.77	304.78	S 7°30'12" E
	50	90°00'00"	78.54	50.00	35.96	N 68°48'24" W
	50	90°00'00"	78.54	50.00	35.96	S 21°11'36" W
	166.0	6°33'57"	130.23	92.22	130.13	N 71°53'01" W
	50	135°12'21"	117.99	121.93	92.46	N 43°47'47" E
	330.87	33°48'04"	195.19	100.29	192.38	N 40°42'26" W
	1060	5°00'28"	147.99	74.04	147.94	S 55°03'14" E
	900	13°58'31"	313.77	168.63	312.18	N 62°28'16" W
	50	94°20'57"	82.34	53.95	73.34	N 60°21'00" E
	50	90°00'00"	78.54	50.00	35.96	N 31°48'28" W
	243.04	65°40'32"	278.59	166.86	263.58	S 19°38'44" E
	193.04	65°40'32"	221.27	124.59	209.96	S 19°38'44" E
	50	90°00'00"	78.54	50.00	35.96	S 7°30'00" E
	50	90°00'00"	78.54	50.00	35.96	S 82°30'00" W
	764.46	22°31'18"	300.49	152.21	298.46	S 63°45'35" E
	814.6	22°31'18"	320.15	162.17	318.09	S 63°45'35" E
	350	38°47'06"	236.92	123.20	232.43	S 85°38'08" W
	300	38°47'06"	203.08	105.60	199.22	S 85°38'08" W
	200	61°18'00"	213.98	118.52	203.92	S 68°09'00" W
	250	61°18'00"	267.47	148.14	254.90	S 68°09'00" W
	50	110°08'58"	101.86	80.25	84.87	N 23°07'31" W
	50	63°51'01"	55.72	31.15	52.88	N 66°52'30" E
	50	41°24'35"	36.14	18.90	35.96	N 55°38'16" E
	50	41°24'35"	36.14	18.90	35.96	N 14°14'42" E
	50	322°48'08"	223.35	56.69	75.00	N 55°03'01" W



PLAT NO.2
SECTION "B"
HAMPTON
A DEVELOPMENT OF
HAMPTON INCORPORATED
9TH ELECTION DISTRICT BALTIMORE COUNTY
Scale: 1"=100'
May 23, 1951

NOTES:
The streets and/or roads shown hereon and the mention thereof in deeds are for the purpose of description only and the same are not intended to be dedicated to public use; the fee simple title thereof is expressly reserved in HAMPTON INCORPORATED, a body corporate, its successors and assigns, the owner of the tract shown hereon.

NOTE:
The requirements of sections 72A, 72B and of Article 17 of the Annotated Code of Md., 1939 Edition (Title: Clerks of Court, Subtitle: Clerks of Circuit Courts) as far as they relate to the making of this plat and setting the markers have been complied with.

Francis H. Truckey (PRESIDENT)
Owner of the land shown hereon

Joseph H. Thompson
Registered Professional Engineer and Land Surveyor

Coordinates Shown On This Plat Are Based On Metropolitan District Of Baltimore County Coordinate System.

HIGHWAYS DEPARTMENT OF BALTIMORE COUNTY
APPROVED FOR STREET ALIGNMENT AND LOCATION
By *John Smith* ROAD ENGINEER
Sept 26 1951 DATE

APPROVED FOR BALTIMORE COUNTY PLANNING COMMISSION
By *Malcolm H. Dice* DIRECTOR
Sept 26 1951 DATE

THOMPSON, GRACE AND MAYS, INC.
ENGINEERS - CONTRACTORS
FIDELITY TRUST COMPANY BLDG.
TOWSON 4, MARYLAND