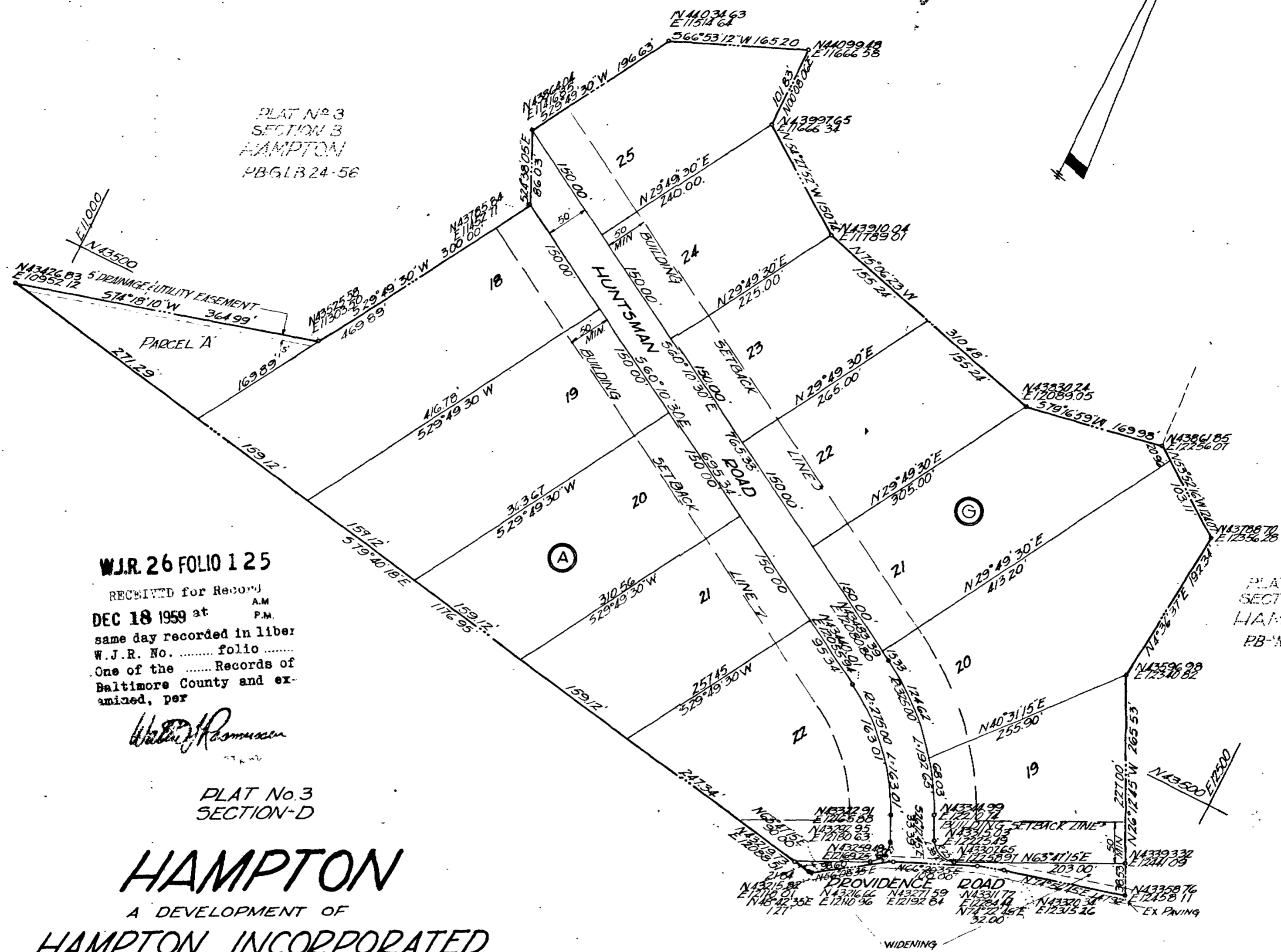


E 110.00
N 41.000

PLAT No. 3
SECTION B
HAMPTON
PB 6 LB 24-56



W.J.R. 26 FOLIO 125

RECEIVED for Record
DEC 18 1959 at A.M.
same day recorded in liber P.M.
W.J.R. No. folio
One of the Records of
Baltimore County and ex-
amined, per

William F. Parthen

PLAT No. 3
SECTION-D

HAMPTON

A DEVELOPMENT OF
HAMPTON INCORPORATED

% J. ELMER WEISHEIT JR.
FIRST NATIONAL BANK BUILDING
TOWSON 4 MARYLAND

9TH ELECTION DISTRICT BALTIMORE COUNTY, MD.
SCALE: 1" = 100' JULY 27, 1959

THE STREETS AND/OR ROADS AS SHOWN HEREON AND THE MENTION THEREOF IN DEEDS ARE FOR THE PURPOSE OF DESCRIPTION ONLY AND THE SAME ARE NOT INTENDED TO BE DEDICATED TO PUBLIC USE IN FEE SIMPLE TITLE THEREOF IS EXPRESSLY RESERVED IN THE GRANTORS OF THE DEED TO WHICH THIS PLAT IS ATTACHED THEIR HEIRS AND ASSIGNS

COORDINATES SHOWN ON THIS PLAT ARE BASED ON THE METROPOLITAN DISTRICT OF BALTIMORE COUNTY COORDINATE SYSTEM *5738 N 426926 E 5017 59 - *8739 N 44340.90 E 5202 03

THE REQUIREMENTS OF SECTIONS 71 TO 74 OF ARTICLE 17 OF THE ANNOTATED CODE OF MARYLAND (1951 EDITION) (TITLE CLERKS OF COURT, SUBTITLE CLERKS OF CIRCUIT COURT) AS FAR AS THEY RELATE TO THE MAKING OF THIS PLAT AND SETTING OF MARKERS HAVE BEEN COMPLIED WITH.

HAMPTON INCORPORATED

OWNER: *J. Elmer Weisheit Jr.* PRESIDENT
REGISTERED PROFESSIONAL LAND SURVEYOR LICENCE NO. 1150

75716 NER

DEC 17 1959

APPROVED FOR BALTIMORE COUNTY HEALTH DEPT <i>William F. Parthen M.D.</i> DEPUTY STATE & COUNTY HEALTH OFFICER - DATE 7.10.59	HIGHWAYS DEPARTMENT OF BALTIMORE COUNTY APPROVED FOR STREET ALIGNMENT LOCATION <i>William F. Parthen M.D.</i> ENGINEER DATE	APPROVED FOR BALTIMORE COUNTY PLANNING BOARD <i>William F. Parthen M.D.</i> DIRECTOR DATE	THOMPSON & GRACE ENGINEERS & SURVEYORS 121 ALLEGHANY AVE. TOWSON 4, MD
---	--	---	---

MSA 55W1230-2153 P53334