

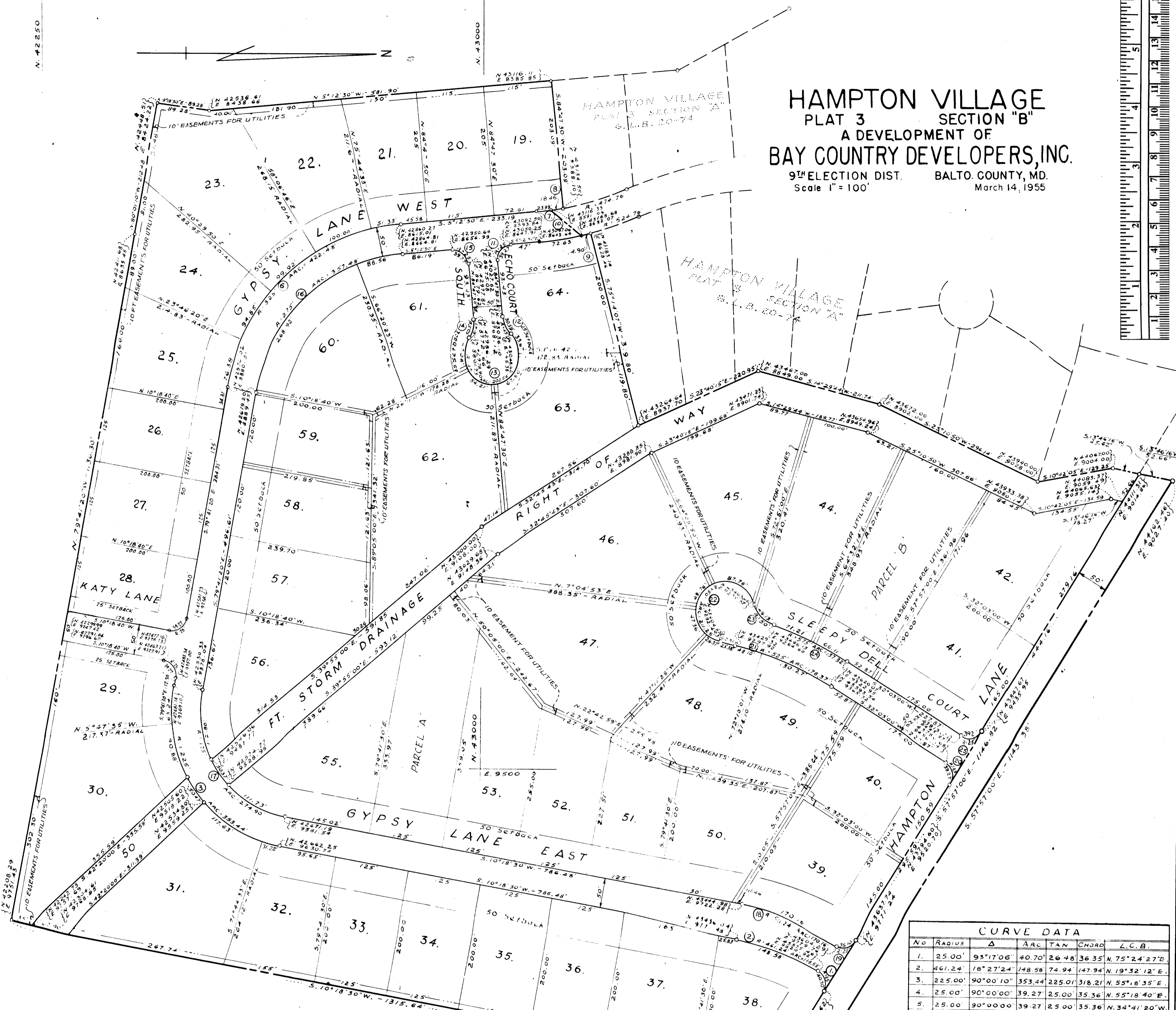
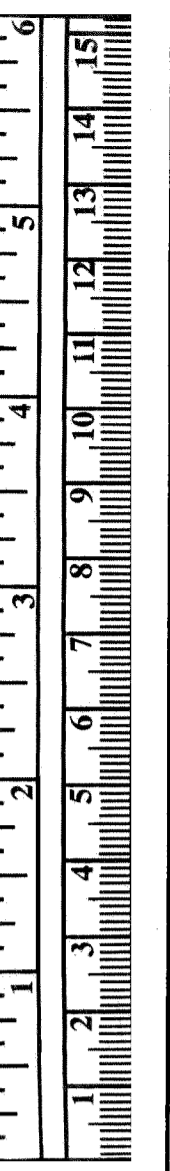
E. 8250

E. 8250

N. 42250

N. 43000

HAMPTON VILLAGE
PLAT 3 SECTION "B"
 A DEVELOPMENT OF
BAY COUNTRY DEVELOPERS, INC.
 9TH ELECTION DIST. BALTO. COUNTY, MD.
 Scale 1" = 100' March 14, 1955



CURVE DATA						
No	RADIUS	Δ	ARC	TAN	CHORD	L.C.B.
1.	25.00'	93°17'06"	40.70'	26.48'	36.35'	N. 75°24'27"E.
2.	461.24'	18°27'24"	148.98'	74.94'	147.94'	N. 19°32'12"E.
3.	225.00'	90°00'10"	353.44'	225.01'	318.21'	N. 55°18'35"E.
4.	25.00'	90°00'00"	39.27'	25.00'	35.36'	N. 55°18'40"E.
5.	25.00'	90°00'00"	39.27'	25.00'	35.36'	N. 34°41'20"W.
6.	325.00'	74°28'50"	422.48'	247.05'	393.35'	N. 42°26'55"W.
7.	474.76'	2°53'44"	23.99'	12.00'	23.99'	N. 6°39'22"W.
8.	474.76'	1°06'51"	18.46'	9.23'	18.46'	N. 9°13'05"W.
9.	524.76'	1°37'37"	14.90'	7.45'	14.90'	N. 13°57'05"W.
10.	524.76'	7°55'46"	72.63'	36.37'	72.57'	N. 9°10'23"W.
11.	25.00'	90°00'00"	39.27'	25.00'	35.36'	N. 50°12'30"W.
12.	45.00'	38°56'54"	30.59'	15.91'	30.00'	N. 65°19'03"E.
13.	45.00'	257°53'48"	202.54'	55.67'	69.99'	N. 5°12'30"W.
14.	45.00'	38°56'54"	30.59'	15.91'	30.00'	N. 75°44'03"W.
15.	25.00'	90°00'00"	39.27'	25.00'	35.36'	N. 39°47'30"E.
16.	275.00'	74°28'50"	357.48'	209.04'	332.84'	N. 42°26'55"W.
17.	175.00'	90°00'10"	274.90'	175.01'	247.49'	N. 55°18'35"E.
18.	511.24'	19°04'11"	170.16'	85.87'	169.37'	N. 19°50'35"E.
19.	25.00'	87°19'41"	38.10'	23.86'	34.52'	N. 14°17'10"W.
20.	25.00'	90°00'00"	39.27'	25.00'	35.36'	N. 77°03'00"E.
21.	525.00'	19°28'00"	178.37'	90.05'	177.52'	N. 22°19'00"E.
22.	50.00'	242°04'37"	211.25'	83.01'	85.68'	N. 46°22'42"W.
23.	50.80'	56°17'37"	49.13'	26.75'	47.17'	N. 46°30'49"E.
24.	575.00'	13°41'00"	137.32'	68.99'	136.99'	N. 25°12'30"E.
25.	25.00'	90°00'00"	39.27'	25.00'	35.36'	N. 12°57'00"W.

The requirements of Sections 72A, 72B and of Article 17 of the Annotated Codes of Md 1939 Edition, (Title: Clerks of Court, Subtitle: Clerks of Circuit Courts), as far as they relate to the making of this plat and setting the markers have been complied with.

BAY COUNTRY DEVELOPERS, INC.
 VALLEY VIEW RD., TOWSON 4, MD.

Michael P. ...
 OWNER OF THE LAND SHOWN HEREON

James S. Spamer
 REGISTERED PROFESSIONAL ENGINEER #2181

NOTES:
 The streets and/or roads as shown hereon and the mention hereof in deeds are for the purpose of description only and the same are not intended to be dedicated to public use; the fee simple title thereof is expressly reserved in the grantors of the deed to which this plat is attached, their heirs and assigns.

Coordinates shown on this plat are based on the Metropolitan District of Baltimore County Coordinate system.

RECORDED for Record
 MAY 19 1955 at
 MAY 19 1955
 DEPT. OF RECORDS
 BALTIMORE COUNTY
 CLERK

STATE HEALTH DEPARTMENT APPROVAL <i>William H. ...</i> DEPUTY STATE HEALTH OFFICER	APPROVED FOR BALTIMORE COUNTY PLANNING COMMISSION <i>Michael P. ...</i> DIRECTOR	HIGHWAYS DEPARTMENT OF BALTIMORE COUNTY APPROVED FOR STREET ALIGNMENT AND LOCATION <i>James S. Spamer</i> REGISTERED PROFESSIONAL ENGINEER	JAMES S. SPAMER REGISTERED PROFESSIONAL ENGINEER 400 N. YORK ROAD TOWSON 4, MD.
--	--	--	--