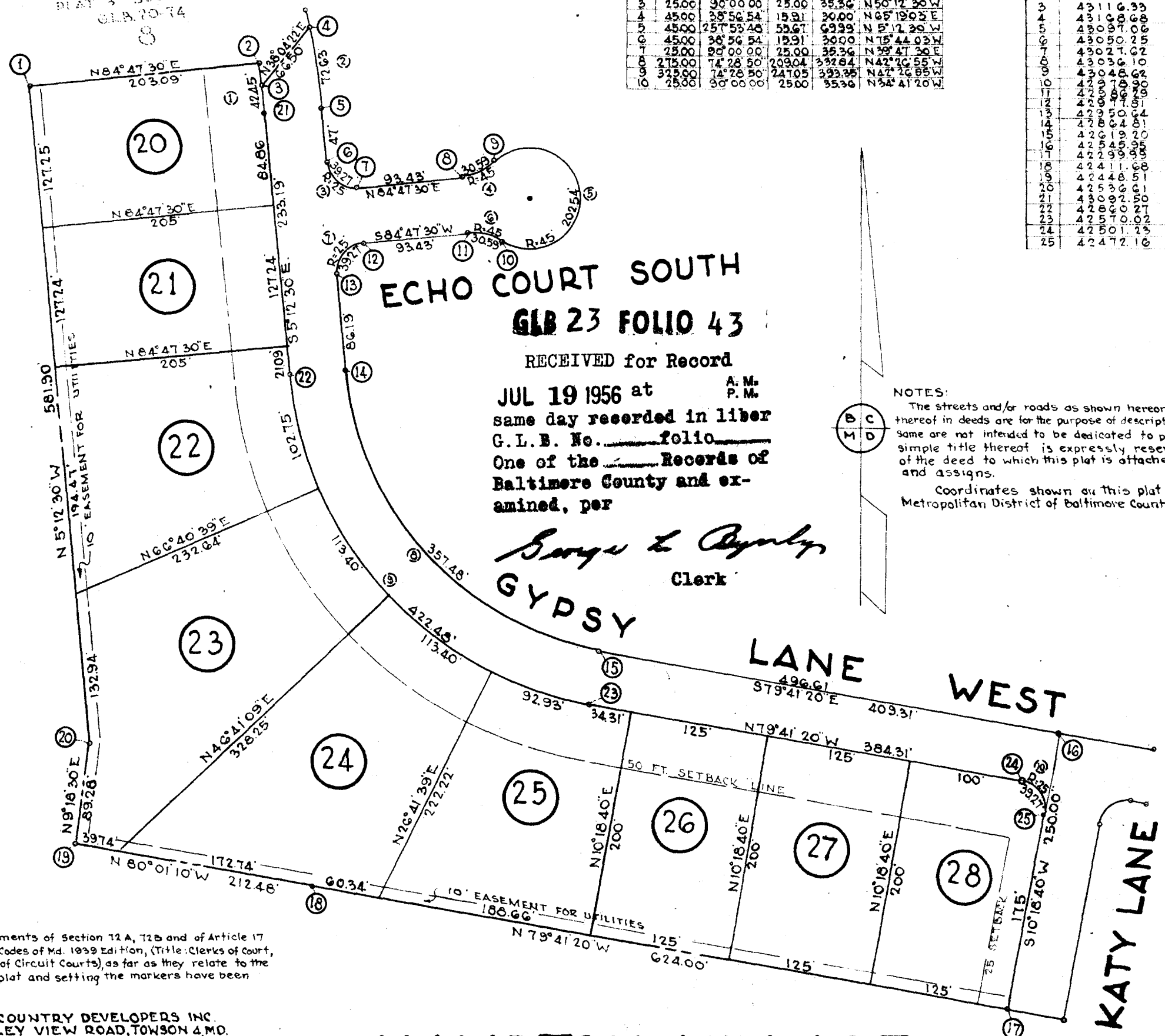


HAMPTON VILLAGE  
PLAT 3 SECTION A  
G.L.B. 20-74



No.	Radius	Δ	Tan.	Chord	L.C.B.
1	474.70	5° 07' 24"	21.24	42.44	N 7° 46' 12" W
2	524.70	7° 55' 46"	36.37	72.57	N 9° 10' 23" W
3	25.00	90° 00' 00"	25.00	35.36	N 50° 12' 30" W
4	45.00	38° 56' 54"	15.91	30.00	N 65° 19' 03" E
5	45.00	25° 55' 46"	12.91	25.00	N 57° 12' 30" W
6	45.00	38° 56' 54"	15.91	30.00	N 15° 44' 03" W
7	25.00	90° 00' 00"	25.00	35.36	N 39° 47' 30" E
8	275.00	74° 28' 50"	209.04	332.64	N 42° 10' 55" W
9	325.00	74° 28' 50"	247.05	393.35	N 42° 10' 55" W
10	25.00	90° 00' 00"	25.00	35.36	N 34° 41' 20" W

NO	NORTH	EAST
1	43116.11	8385.85
2	43131.55	8588.10
3	43116.33	8591.06
4	43090.68	8663.22
5	43090.70	8664.71
6	43090.25	8664.71
7	43090.25	8664.71
8	43090.25	8664.71
9	43090.25	8664.71
10	43090.25	8664.71
11	43090.25	8664.71
12	43090.25	8664.71
13	43090.25	8664.71
14	43090.25	8664.71
15	43090.25	8664.71
16	43090.25	8664.71
17	43090.25	8664.71
18	43090.25	8664.71
19	43090.25	8664.71
20	43090.25	8664.71
21	43090.25	8664.71
22	43090.25	8664.71
23	43090.25	8664.71
24	43090.25	8664.71
25	43090.25	8664.71

**ECHO COURT SOUTH**  
**G.L.B. 23 FOLIO 43**

RECEIVED for Record  
JUL 19 1956 at A.M.  
same day recorded in liber P.M.  
G.L.B. No. \_\_\_\_\_ folio \_\_\_\_\_  
One of the \_\_\_\_\_ Records of  
Baltimore County and ex-  
amined, per

*Borge & Reynolds*  
Clerk

NOTES:  
The streets and/or roads as shown hereon and the mention thereof in deeds are for the purpose of description only and the same are not intended to be dedicated to public use; the fee simple title thereof is expressly reserved in the grantors of the deed to which this plat is attached, their heirs and assigns.  
Coordinates shown on this plat are based on the Metropolitan District of Baltimore County Coordinate system.

The requirements of Section 12A, 12B and of Article 17 of the Annotated Codes of Md. 1939 Edition, (Title: Clerks of Court, Subtitle: Clerks of Circuit Courts), as far as they relate to the making of this plat and setting the markers have been complied with.

BAY COUNTRY DEVELOPERS INC.  
VALLEY VIEW ROAD, TOWSON 4, MD.

*John L. Smith, Jr.*  
OWNER OF THE LAND SHOWN HEREON

*William C. Luetke Jr.*  
REG. PROF. ENGINEER & LAND SURVEYOR #2005

**HAMPTON VILLAGE**  
A RESUBDIVISION OF LOTS 19-28 INCL.  
A PART OF PLAT 3 SECT. "B"  
A DEVELOPMENT OF  
**BAY COUNTRY DEVELOPERS, INC.**  
9TH ELECTION DIST. BALTO. COUNTY, MD.  
SCALE 1"=100' MAY 22, 1956

STATE HEALTH DEPARTMENT APPROVAL <i>William H. Warthen</i> DEPUTY STATE & COUNTY HEALTH OFF. DATE 7/13/56	APPROVED FOR BALTIMORE COUNTY PLANNING BOARD <i>William Bice</i> DIRECTOR DATE 7/13/56	HIGHWAYS DEPT. OF BALTO. COUNTY APPROVED FOR STREET ALIGNMENT & LOCATION <i>Robert G. Jozys</i> ROADS ENGINEER DATE 7/16/56	JAMES S. SPAMER & ASSOCIATES ENGINEERS & SURVEYORS 400 N. YORK RD. TOWSON 4 MARYLAND
---	--	---	---

MSASSW1236-1522